

# East Area Planning Committee Presentation

[www.oxford.gov.uk](http://www.oxford.gov.uk)

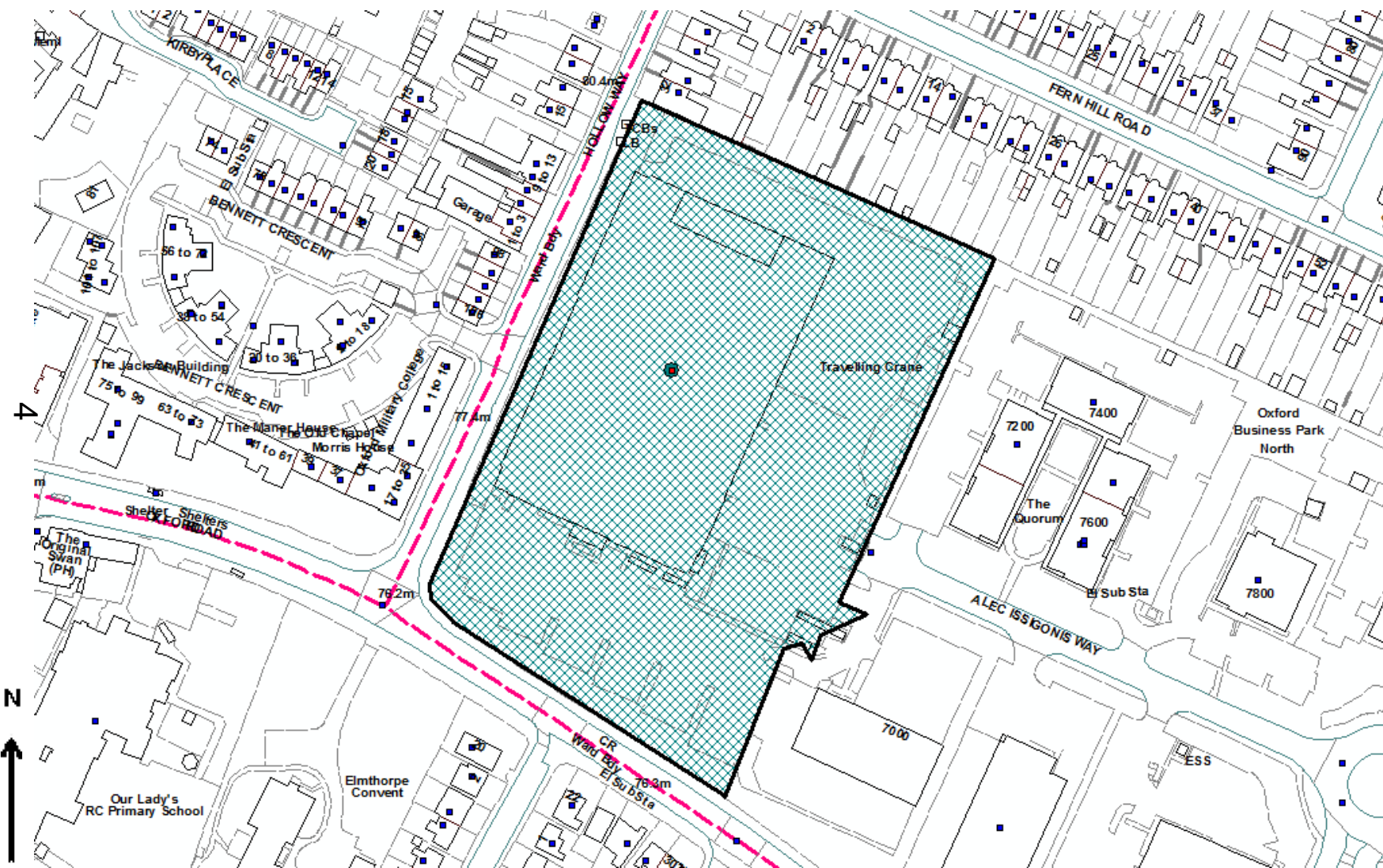


- 17/00923/FUL
- 7000 Alec Issigonis Way

3



# Site location





# View from Hollow Way looking north

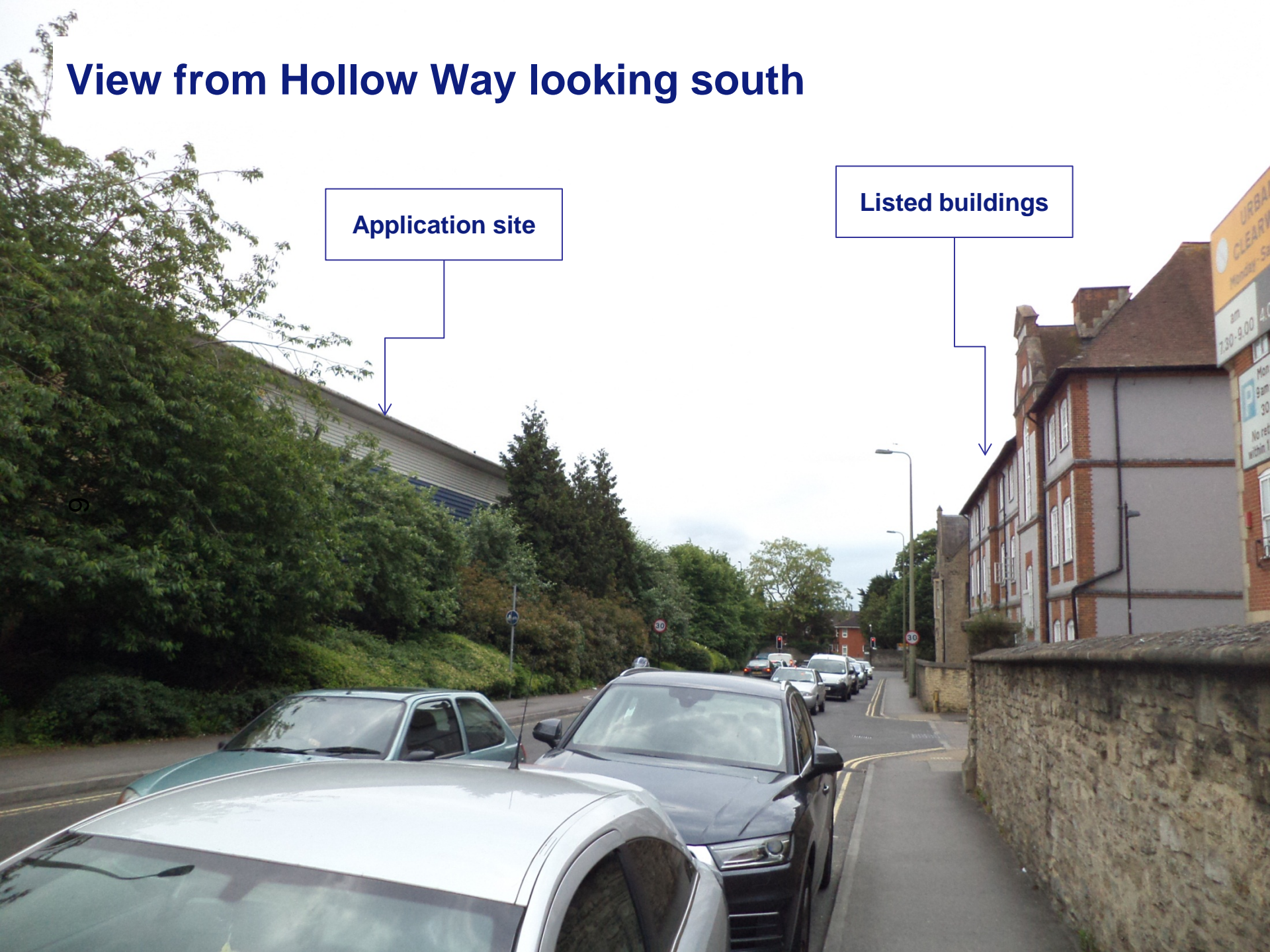




# View from Hollow Way looking south

Application site

Listed buildings





# East elevation





## South-eastern corner of the building





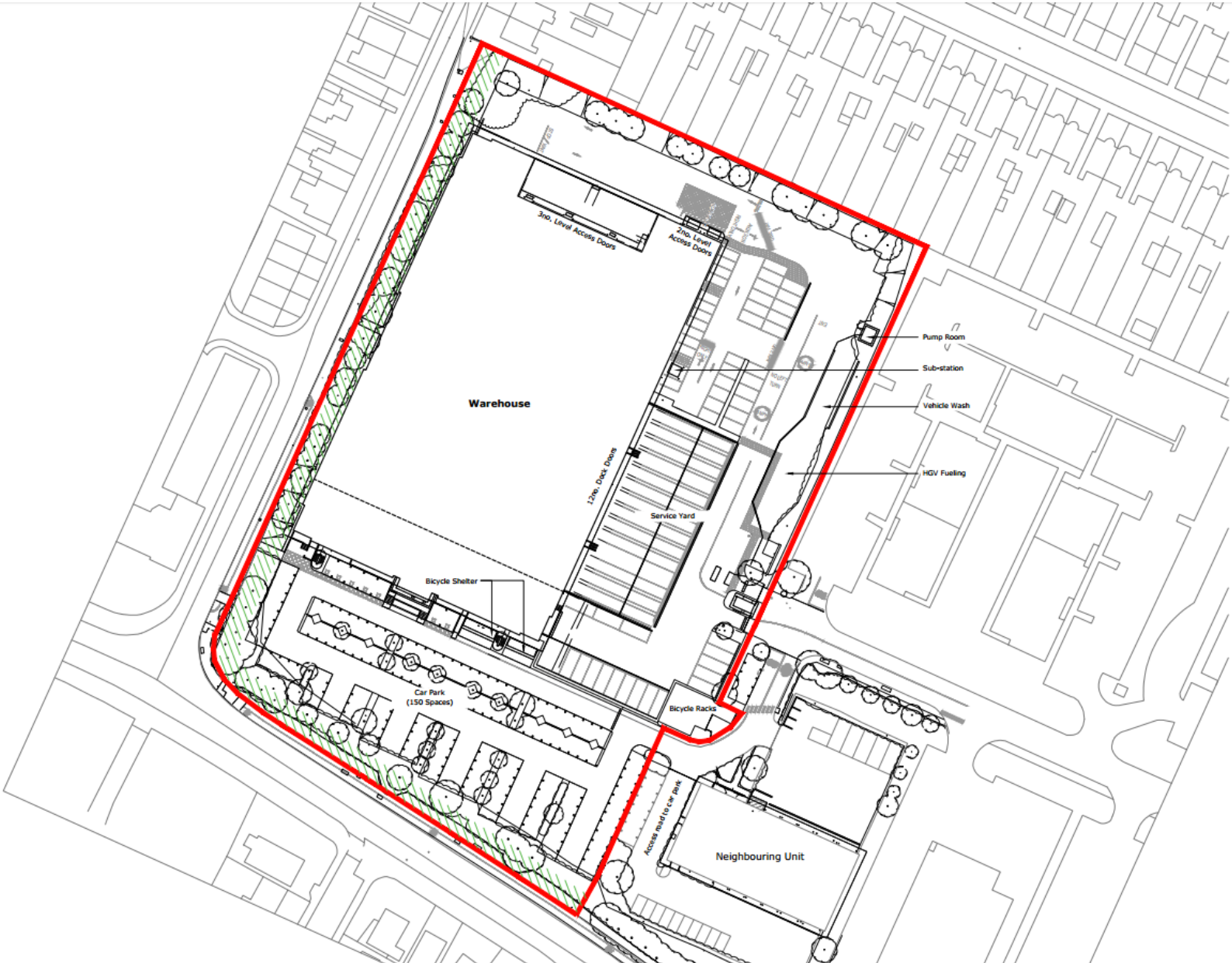
# View from corner of Hollow Way and Garsington Road

6



# Existing site plan

10





# Proposed site plan

11





# Existing elevations – north and south



**Unit 2 - North Facing Elevation**

Scale 1:200



**Unit 1 - South Facing Elevation**

Scale 1:200



# Proposed elevations – north and south



**Unit 1 North Facing Elevation**

Scale 1:200

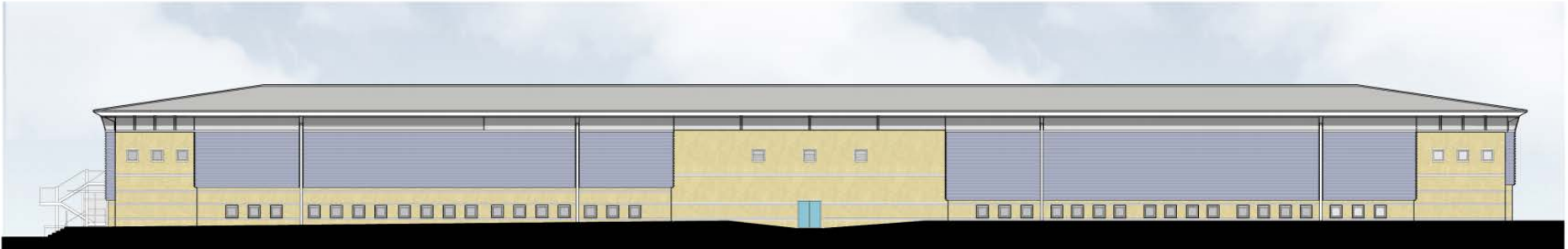


**Unit 1 - South Facing Elevation**

Scale 1:200



# Existing elevations – west and east



Unit 1 & 2 - West Facing Elevation  
Scale 1:500



Unit 1 & 2 - East Facing Elevation  
Scale 1:500

# Proposed elevations – west and east



Unit 2 Unit 1

**Unit 1 & 2 - West Facing Elevation**  
Scale 1:200



Unit 2 Unit 1

**Unit 1 & 2 - East Facing Elevation**  
Scale 1:200



This page is intentionally left blank